

MONTHLY MEMBERSHIP PROGRESS REPORT

District 16 J

Results as of: 6/30/2024

GMT:

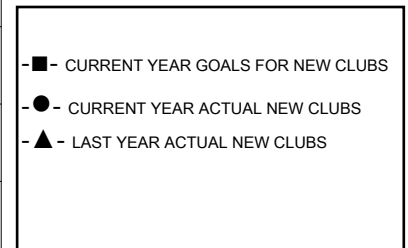
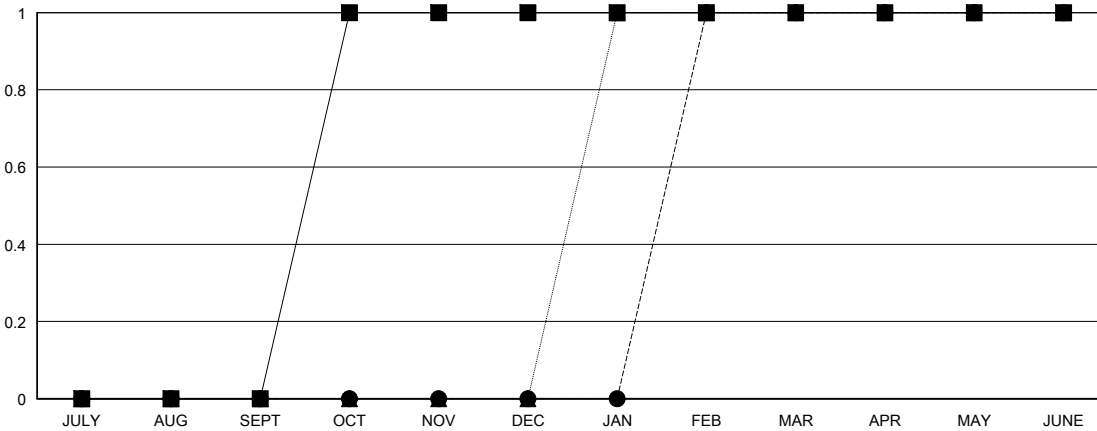
LOCATION NEW JERSEY

GMT CA

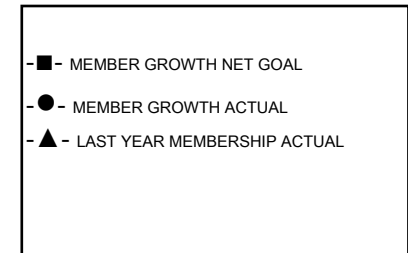
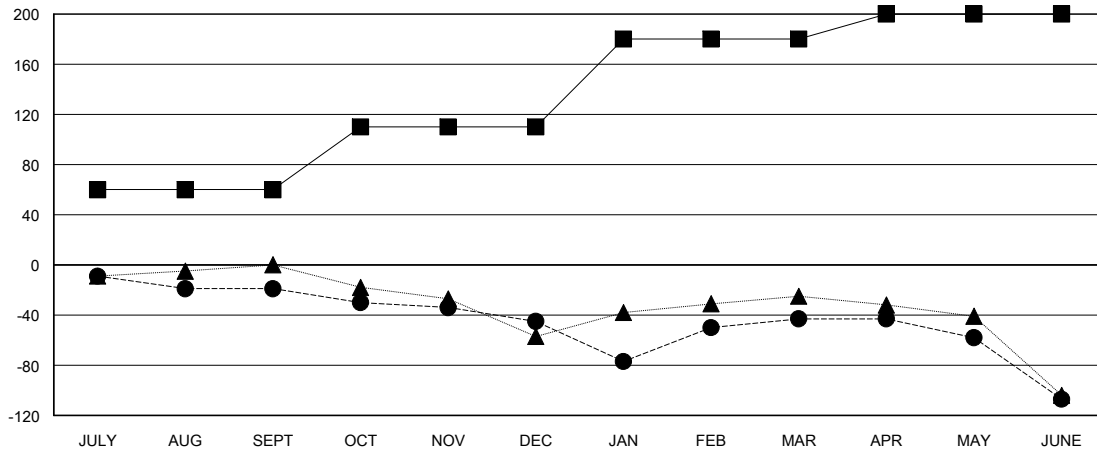
Clubs			
RESULTS FOR 2023-2024			
QUARTER	NEW CLUB GOAL	NEW CLUBS	DROPPED CLUBS
JULY/AUG/SEPT	0	0	1
OCT/NOV/DEC	1	0	2
JAN/FEB/MAR	0	1	1
APR/MAY/JUNE	0	0	2

Members			
RESULTS FOR 2023-2024			
QUARTER	MEMBER GROWTH NET GOAL	MEMBER GROWTH ACTUAL	DROPPED MEMBERS ACTUAL (including transfers)
JULY/AUG/SEPT	60	27	36
OCT/NOV/DEC	50	39	62
JAN/FEB/MAR	70	58	50
APR/MAY/JUNE	20	53	114

GOALS AND ACTUAL NEW CLUBS CUMULATIVE



GOALS AND ACTUAL MEMBERS CUMULATIVE



DROPPED CLUBS: 6	22 CLUBS OF 59 ADDED 1 OR MORE NEW MEMBERS	GENDER DISTRIBUTION	
		MALE 776 (62.94%)	FEMALE 457 (37.06%)
DROPPED MEMBERS		CLICK HERE FOR CUMULATIVE MEMBERSHIP DATA	TOTAL FAMILY UNIT MEMBERS 285
DECEASED 11	CLUB CANCELLED 49		FAMILY MEMBERS PAYING HALF DUES 151
OTHER 202	TOTAL 262		